

CHEROKEE



FOX-TROT

Composed and Arr. by
RAY NOBLE.

Piano

Moderato (not slow)
Brass Soli

A CHORUS *Opt. Vocal*

Sweet In-dian maid - en, Since first I met you.

I can't for - get you Cher - o - kee, sweet - heart

Child of the Prair - ie, Your love keeps call - ing,

My heart en - thrall - ing Cher - o - kee.

PIANO CONDUCTOR & ACCORDEON GUIDE

C

Dreams of summer time Of lover time gone by

F#7 Bb B7 Bm7 E7 A

Throug my memory so tenderly and sigh My

Am D7 D G G9 Gm C7 Eb F9+

D

Sweet In - dian maid - en, One day I'll hold you

Bb F9+ Bb7 Eb Ebm

E Guitar Solo 4 Bars

In my arms fold you Cher - o - kee.

Bb C9 Eb F9 Bb

F

Bb Bb7 Eb Ebm Bb

C9 Eb F9 Bb Eb F9

PIANO CONDUCTOR & ACCORDEON GUIDE

G

B \flat B7 B E7 E m

A7 D D7 D dim C C7 E \flat

H

F9 A \flat B \flat 7+ E \flat B \flat 7 E \flat 9 E \flat 7 A \flat

A \flat A \flat m E \flat F9 A \flat B \flat 7

J Repeat till fade away

E \flat E \flat E \flat 7 A \flat A \flat m

E \flat F9 \flat A \flat E \flat

CHEROKEE

Composed and Arr.^d by
RAY NOBLE.

Guitar or Banjo

FOX-TROT.

Moderato (not slow)

CHORUS *Opt. Vocal*

8 A Bb F7+ Bb7 Eb Ebm Bb

C7 Eb *mf* Fdim Eb F+ B Bb Bb7 Eb

Es Ebm Bb C7 Eb F7 Bb Bb7

C F#7 B B7 Bm7 E7 A C D7

D G O7 Bb C7 Eb F9+ D Bb F9+ Bb7

Es Ebm Bb C7 Eb ESOLO *ad lib.* F9 Bb Bb

Bb Bb F Bb Bb7 Eb Ebm Bb Bb

C7 C7 1 Eb F9 Bb Bb 2 Eb F9 Bb

G B7 E E7 Em A7 D D7 Fdim

C C7 E7 F9 Ab Bb+ H Eb Bb7+ Eb7

Eb7 Ab Abm Abm Eb Eb F9 Ab

Bb7 Eb Eb J Eb Eb Eb7 Eb7 Ab Ab

Repeat till fade away

Abm Abm Eb Eb F9 F9 Ab Eb Eb

PIANO CONDUCTOR & ACCORDEON GUIDE

G

B \flat B7 B E7 Em

A7 D D7 D dim C C7 E \flat

H

F9 A \flat B \flat 7+ E \flat B \flat 7 E \flat 9 E \flat 7 A \flat

A \flat A \flat m E \flat F9 A \flat B \flat 7

J Repeat till fade away

E \flat E \flat 7 A \flat A \flat m

E \flat F9 A \flat E \flat

CHEROKEE



3rd Sax. Eb Alto

FOX-TROT

Composed and Arr.^d by
RAY NOBLE

Moderato (not slow)

A CHORUS (Opt. Vocal)

3rd Tpt.

legato

B

C

D

For vocal only

Copyright MCMXXXVIII by The Peter Maurice Music Co., Ltd., London, England
Sole Selling Agents — Shapiro, Bernstein & Co., Inc.

R.K.O. (Radio City Music Hall) Building, 1270 Sixth Avenue, New York

All Rights Reserved including Public Performance for Profit

International Copyright Secured

Printed in U. S. A.

3rd SAX Eb ALTO

E

F

1

2

G

H

H 3rd Tpt
TO CLAR

I

J Repeat till fade away
CLAR

CHEROKEE

2nd Sax. Bb Tenor



Composed and Arr^d by
RAY NOBLE.

Moderato (not slow)

A CHORUS (Opt. Vocal)

1st Trom

legato

B

C

D

mf

For vocal only

Copyright MCMXXXVIII by The Peter Maurice Music Co., Ltd., London, England

Sole Selling Agents — Shapiro, Bernstein & Co., Inc.

R.K.O. (Radio City Music Hall) Building, 1270 Sixth Avenue, New York

All Rights Reserved including Public Performance for Profit

International Copyright Secured

Printed in U. S. A.

2nd SAX B \flat TENOR

E

3

F

p

1

2

G

H

H 1st Trom

TO CLAR

I

J Repeat till fade away

CLAR

CHEROKEE

Composed and Arr.^d by
RAY NOBLE.

1st Sax. Eb Alto



Moderato (not slow)

2nd Tpt

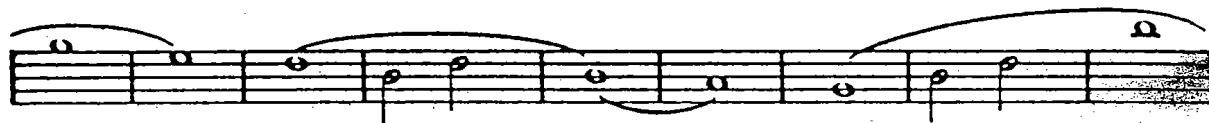


CHORUS (*Opt Vocal*)

A SOLI



mf legato



For Vocal only

Copyright MCMXXXVIII by The Peter Maurice Music Co., Ltd., London, England

Sole Selling Agents — Shapiro, Bernstein & Co., Inc.

R.K.O. (Radio City Music Hall) Building, 1270 Sixth Avenue, New York

All Rights Reserved including Public Performance for Profit

International Copyright Secured

Printed in U. S. A.

1st SAX Eb ALTO

E to Clar

3

F CLART SOLO (AD LIB)

to Alto 12

ALTO

H 2nd Trpt.

to Clar

repeat till fade away

CLART

CHEROKEE

Composed and Arr^d by
RAY NOBLE.

Bass

FOX-TROT.

Moderato (not fast)
8 A CHORUS (Opt. Vocal)

mf

B

C

D Fake four

E 3 F

G

H

J repeat till fade away

Copyright MCMXXXVIII by The Peter Maurice Music Co., Ltd., London, England
Sole Selling Agents — Shapiro, Bernstein & Co., Inc.

R.K.O. (Radio City Music Hall) Building, 1270 Sixth Avenue, New York

All Rights Reserved including Public Performance for Profit

International Copyright Secured

Printed in U. S. A.

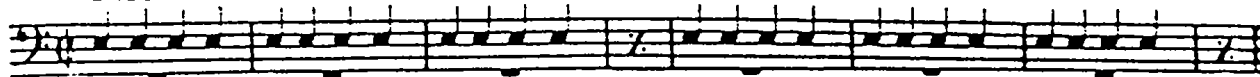
CHEROKEE

Composed and Arr.^d by
RAY NOBLE.

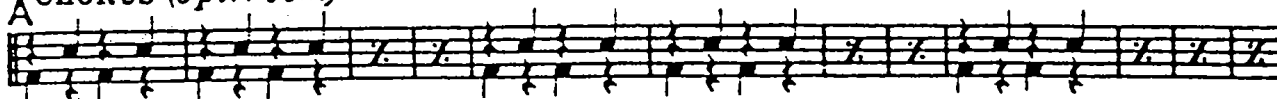
Drums

FOX-TROT

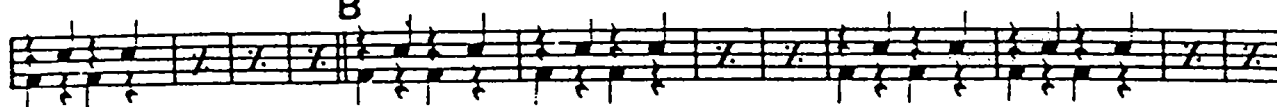
Moderato (not fast)
BRUSHES



A CHORUS (Opt. Vocal)



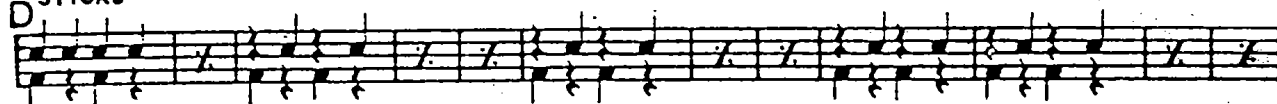
B



C



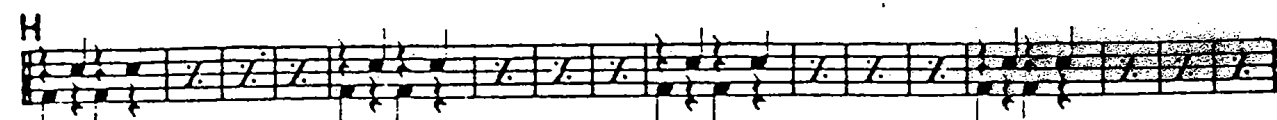
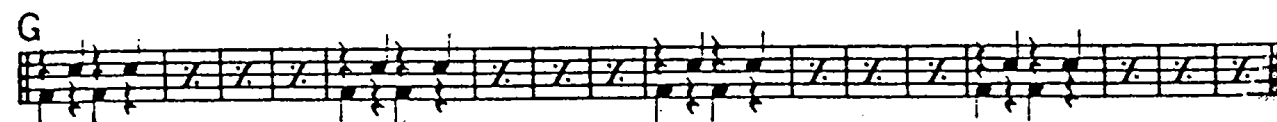
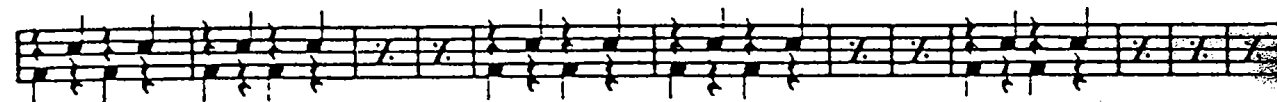
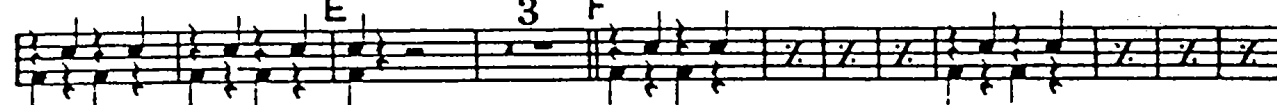
D STICKS



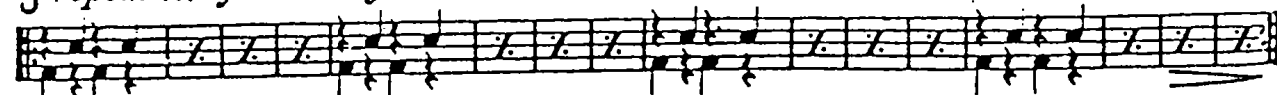
E

3

F



J *repeat till fade away*



CHEROKEE

2nd Trombone

FOX-TROT

Composed and Arr.^d by
RAY NOBLE.

Moderato (not slow)

CUP MUTE

mf

A CHORUS 16 *Opt. Vocal* B CUP MUTE

C 16

D OPEN

Cup Mute

For Vocal Entry

E 3

F HAT

p

1 2

G 16 H HARMON MUTE

Very soft accented legato

J

Repeat till fade away

Copyright MCMXXXVIII by The Peter Maurice Music Co., Ltd., London, England
Sole Selling Agents — Shapiro, Bernstein & Co., Inc.

R.K.O. (Radio City Music Hall) Building, 1270 Sixth Avenue, New York

All Rights Reserved included

Performance for Profit

International Copyright Secured

Printed in U. S. A.

CHEROKEE

1st Trombone

FOX-TROT.

Composed and Arr.^d by
RAY NOBLE.

Moderato (not slow)

CUP MUTE

Musical staff for 1st Trombone, starting with a treble clef and a key signature of one flat. The notation includes a series of notes with stems, some beamed together, and a final note with a fermata.

A CHORUS *Opt. Vocal*
16

CUP MUTE

Musical staff for Chorus A, featuring a treble clef and a key signature of one flat. The notation consists of a series of notes with stems, some beamed together, and a final note with a fermata.

Musical staff for Chorus B, featuring a treble clef and a key signature of one flat. The notation consists of a series of notes with stems, some beamed together, and a final note with a fermata.

Musical staff for Chorus C, featuring a treble clef and a key signature of one flat. The notation includes notes with stems, some beamed together, and a final note with a fermata. The word "COPEN" is written above the staff.

Musical staff for Chorus D, featuring a treble clef and a key signature of one flat. The notation includes notes with stems, some beamed together, and a final note with a fermata. The words "Free obligato" are written below the staff.

Musical staff for Chorus E, featuring a treble clef and a key signature of one flat. The notation includes notes with stems, some beamed together, and a final note with a fermata. The word "D" is written above the staff.

Musical staff for Chorus F, featuring a treble clef and a key signature of one flat. The notation includes notes with stems, some beamed together, and a final note with a fermata. The words "For Vocal only" are written below the staff.

Musical staff for Chorus G, featuring a treble clef and a key signature of one flat. The notation includes notes with stems, some beamed together, and a final note with a fermata. The word "E" is written above the staff.

Musical staff for Chorus H, featuring a treble clef and a key signature of one flat. The notation includes notes with stems, some beamed together, and a final note with a fermata. The word "F HAT" is written above the staff.

Musical staff for Chorus I, featuring a treble clef and a key signature of one flat. The notation includes notes with stems, some beamed together, and a final note with a fermata. The word "G" is written above the staff.

Musical staff for Chorus J, featuring a treble clef and a key signature of one flat. The notation includes notes with stems, some beamed together, and a final note with a fermata. The words "HARMON MUTE" are written above the staff.

Musical staff for Chorus K, featuring a treble clef and a key signature of one flat. The notation includes notes with stems, some beamed together, and a final note with a fermata. The words "Very soft accented legato" and "Repeat till fade away" are written below the staff.

Copyright MCMXXXVIII by The Peter Maurice Music Co., Ltd., London, England

Sole Selling Agents — Shapiro, Bernstein & Co., Inc.

R.K.O. (Radio City Music Hall) Building, 1270 Sixth Avenue, New York

All Rights Reserved including Public Performance for Profit

International Copyright Secured

Printed in U. S. A.

CHEROKEE

4th Sax Bb Tenor

FOX TROT.

Composed and Arr^d by
RAY NOBLE.

Mod^{to} Not too Slow

CHOS (opt. Vocal)

2nd Trom

Copyright MCMXXXVIII by The Peter Maurice Music Co., Ltd., London, England

Sole Selling Agents — Shapiro, Bernstein & Co., Inc.

R.K.O. (Radio City Music Hall) Building, 1270 Sixth Avenue, New York

All Rights Reserved including Public Performance for Profit

International Copyright Secured

Printed in U. S. A.

CHEROKEE



Composed and Arr.^d by
RAY NOBLE.

1st Bb Trumpet

Moderato (not slow)
CUP MUTE

CHORUS
A *Opt. Vocal* 16 B CUP MUTE

D OPEN

For vocal only

E 3 F 16 SOLO (*ad lib*) CUP MUTE

1 G 16 H HARMON MUTE

Very soft accented legato

repeat till fade away

Copyright MCMXXXVIII by The Peter Maurice Music Co., Ltd., London, England
Sole Selling Agents — Shapiro, Bernstein & Co., Inc.
R.K.O. (Radio City Music Hall) Building, 1270 Sixth Avenue, New York
All Rights Reserved including Public Performance for Profit
International Copyright Secured Printed in U. S. A.

CHEROKEE

2nd Bb Trumpet

FOX-TROT

Composed and Arr.^d by
RAY NOBLE.

Moderato (not slow)
CUP MUTE

CHORUS
Opt. Vocal
A 16 B CUP MUTE

C 16

D OPEN
CUP MUTE
For vocal only

E 3 F HAT
p

1 2 G 16 H HARMON MUTE

Very soft accented legato
repeat till fade away

Copyright MCMXXXVIII by The Peter Maurice Music Co., Ltd., London, England
Sole Selling Agents — Shapiro, Bernstein & Co., Inc.

R.K.O. (Radio City Music Hall) Building, 1270 Sixth Avenue, New York

All Rights Reserved including Public Performance for Profit

International Copyright Secured

Printed in U. S. A.

CHEROKEE

Composed and Arr^d by
RAY NOBLE.

3rd Bb Trumpet

FOX-TROT.

CHORUS

Moderato (not slow)
CUP MUTE

A *Opt. Vocal* 16 B CUP MUTE

D OPEN

E 3 F HAT

Copyright MCMXXXVIII by The Peter Maurice Music Co., Ltd., London, England
Sole Selling Agents — Shapiro, Bernstein & Co., Inc.

R.K.O. (Radio City Music Hall) Building, 1270 Sixth Avenue, New York

All Rights Reserved including Public Performance for Profit

International Copyright Secured

Printed in U. S. A.